



±12.06 Acres Old Grove Rd



OLD GROVE ROAD, PIEDMONT, SC 29673

PRICE REDUCED:

~~\$325,000~~

\$199,000

Drastic reduction from \$325,000 to \$199,000!

±12.06 Acres with a combined total of 1,831 feet of Frontage on Old Grove and Davis Roads

Greenville County zoning permitted uses for R-7.5 Zoning are Zero Lot Line Dwelling and Single-Family Detached Dwelling

Property is in close proximity to I-85 from White Horse Road and minutes to Piedmont Highway and points North or South

Electric, Sewer, and Water available

Seller will consider all reasonable offers



CONTACT:

SCOTT SNEDIGAR | ssnedigar@wilsonkibler.com | 864.444.4814

JACK SNEDIGAR | snedigar@wilsonkibler.com | 864.979.1978



Wilson Kibler
COMMERCIAL REAL ESTATE

WILSON KIBLER | 420 THE PARKWAY SUITE K GREER, SC 29650 | 803.779.8600 www.wilsonkibler.com

The information contained herein has been obtained from sources we believe to be reliable; however, Wilson Kibler has not conducted any investigation regarding these matters and makes no warranty or representation whatsoever regarding the accuracy or completeness of the information provided.

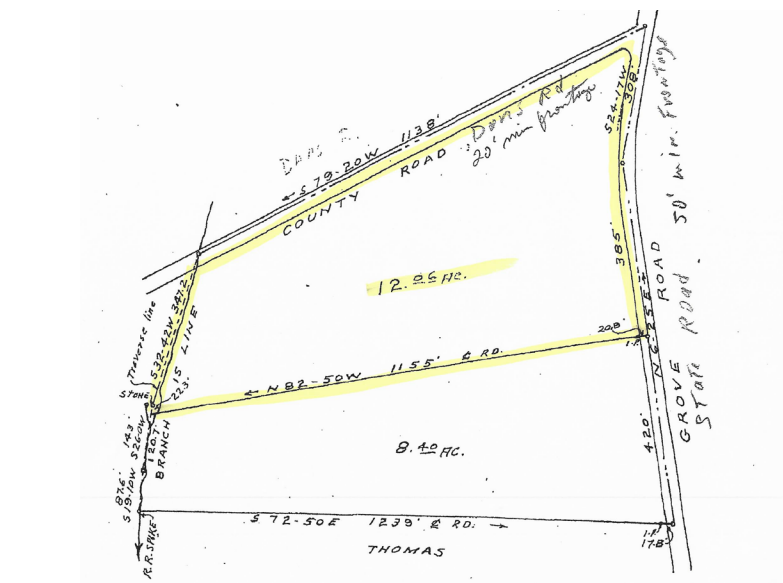
12.06 Acres Old Grove Rd



OLD GROVE ROAD, PIEDMONT, SC 29673



Wilson Kibler
COMMERCIAL REAL ESTATE



CONTACT:

SCOTT SNEDIGAR | ssnedigar@wilsonkibler.com | 864.444.4814

JACK SNEDIGAR | snedigar@wilsonkibler.com | 864.979.1978

WILSON KIBLER | 420 THE PARKWAY SUITE K GREER, SC 29650 | 803.779.8600 www.wilsonkibler.com

The information contained herein has been obtained from sources we believe to be reliable; however, Wilson Kibler has not conducted any investigation regarding these matters and makes no warranty or representation whatsoever regarding the accuracy or completeness of the information provided.



Wilson Kibler
COMMERCIAL REAL ESTATE